



270 Washington Street, S.W.
Atlanta, Georgia 30334
Web: www.usg.edu/research/

DUAL ENROLLMENT DIGEST

Section 1:

Section 2:

2.1

2.2

2.3

Section 3:

Section 4:

4.1

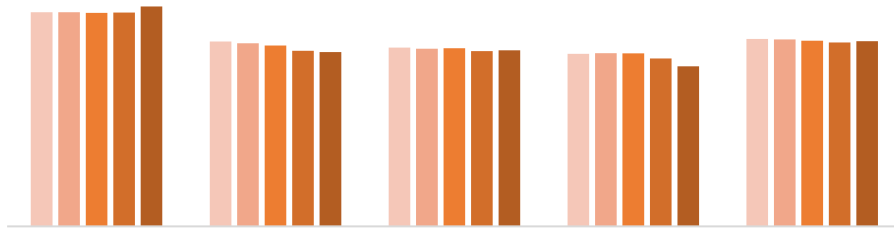
4.2

Appendix

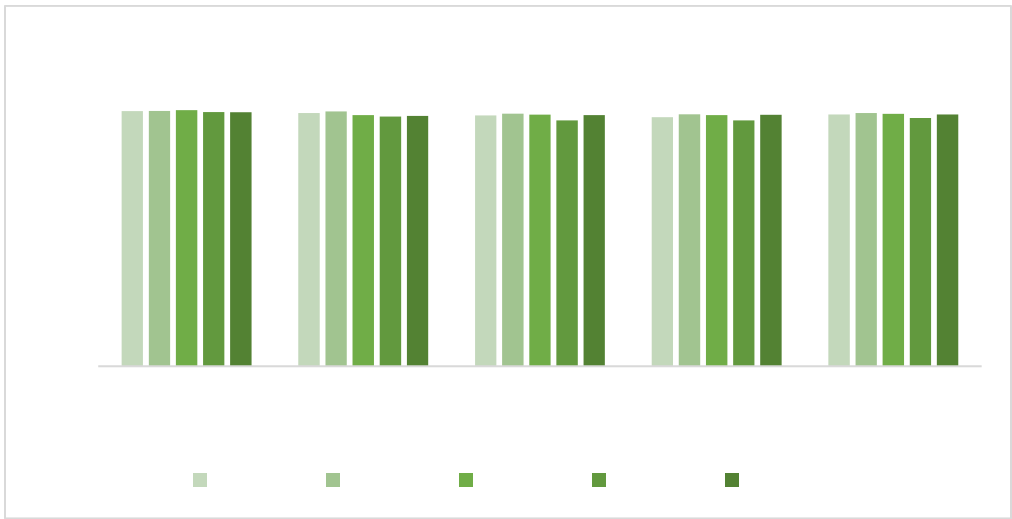
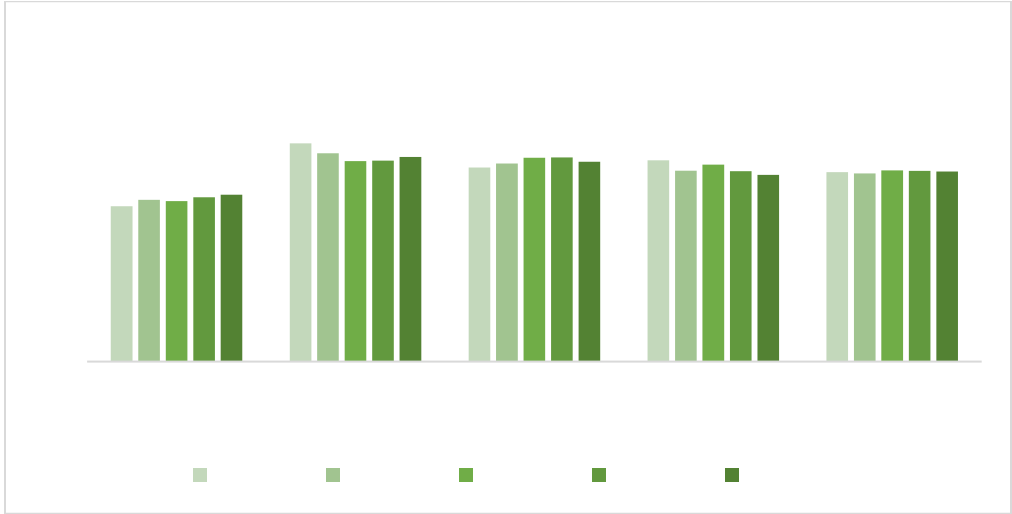
Section 1: Introduction

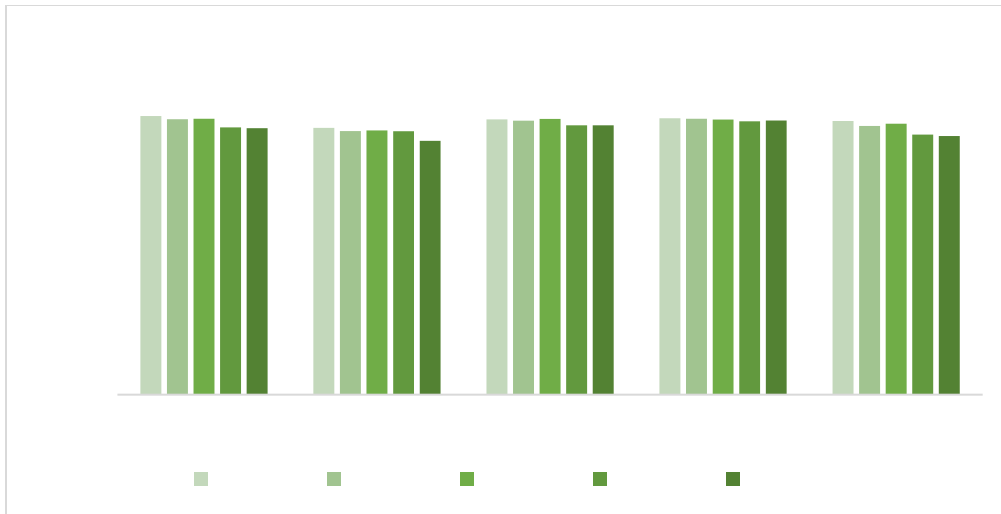
—

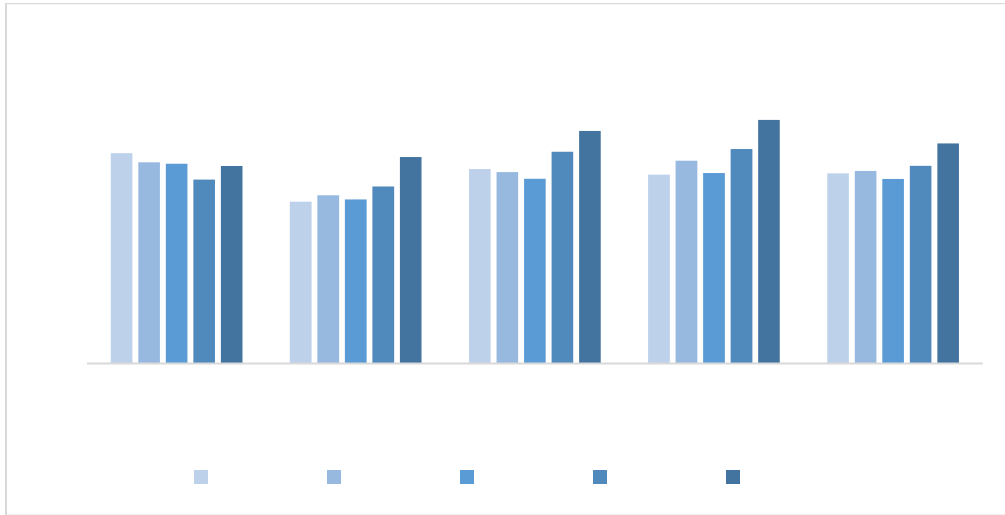
—



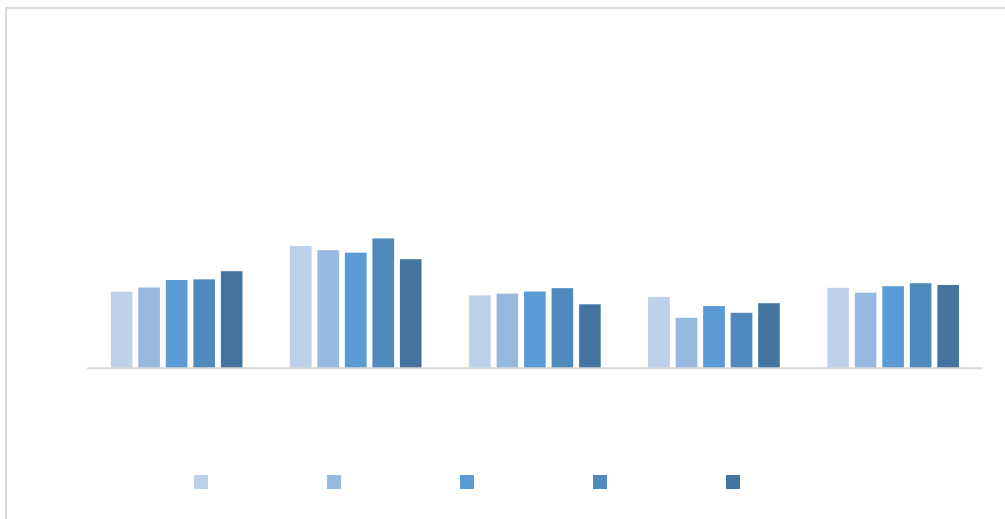
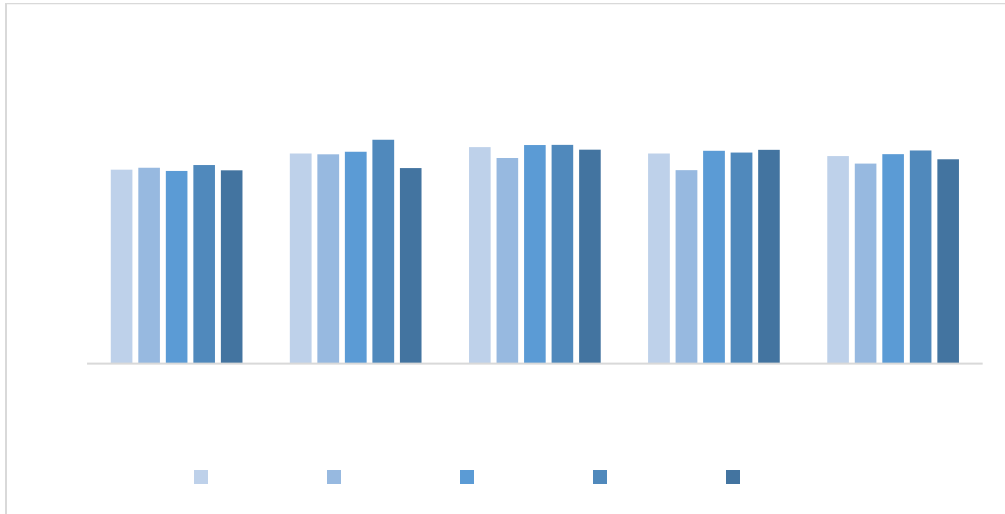
Section 2.2 Dual Enrollment Course Taking and Performance







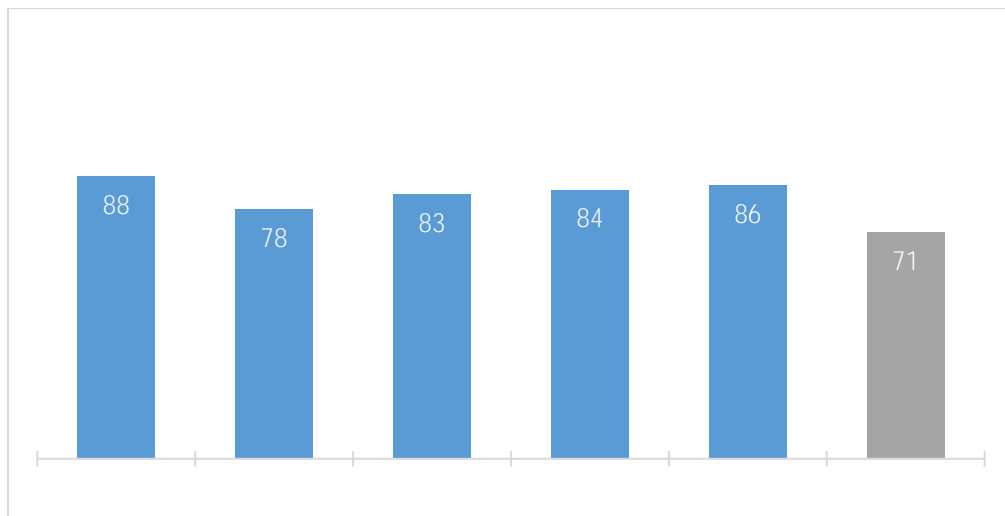
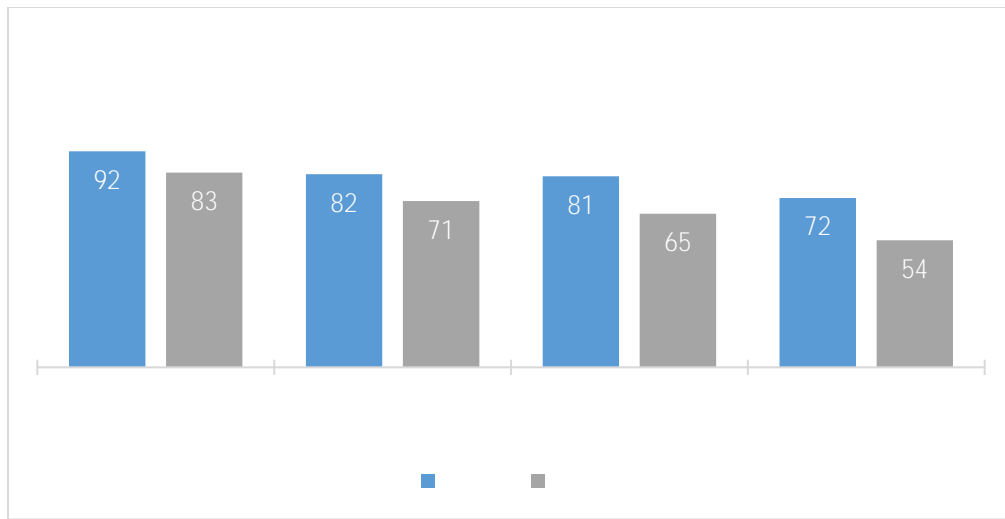
Section 3: Conversion of Dual Enrollment Students into First-time Freshmen at USG

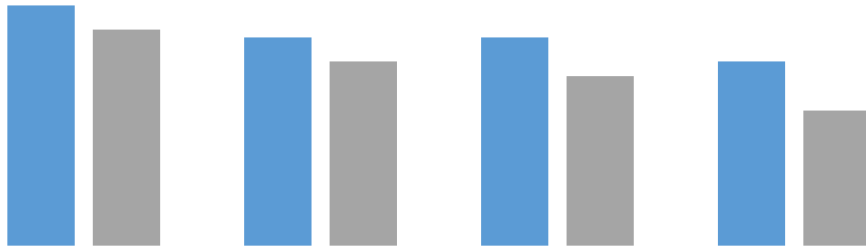


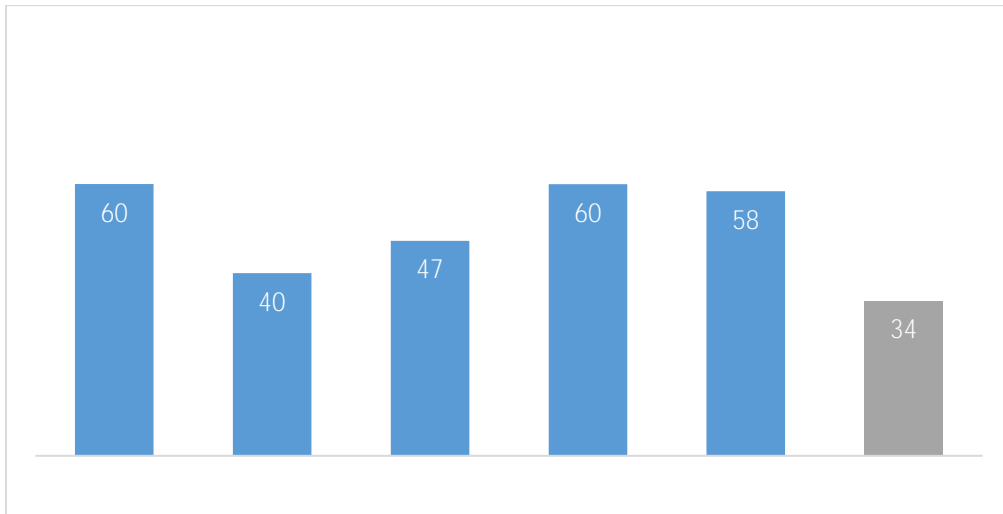
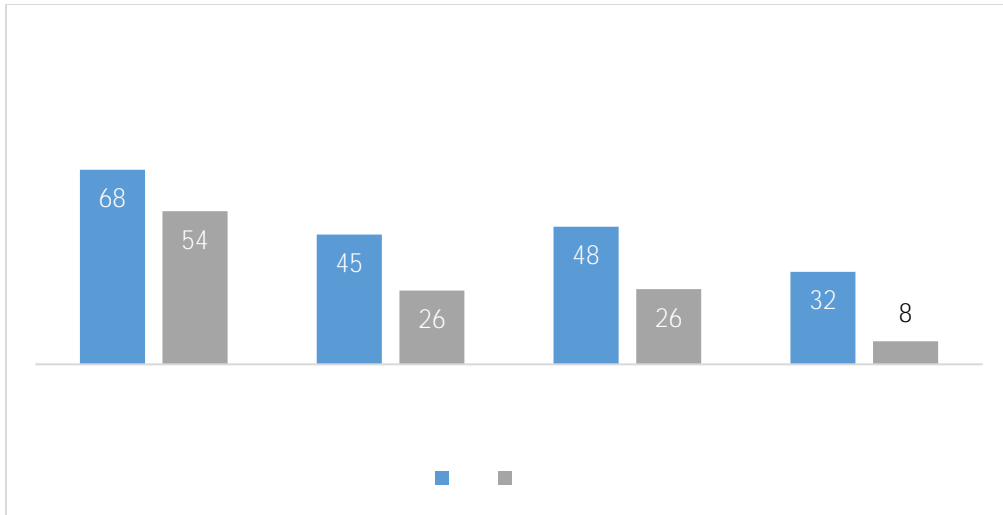
Section 4: Postsecondary Outcomes of Former Dual Enrollment Students

4.1 First-time Freshmen with Dual Enrollment Credit

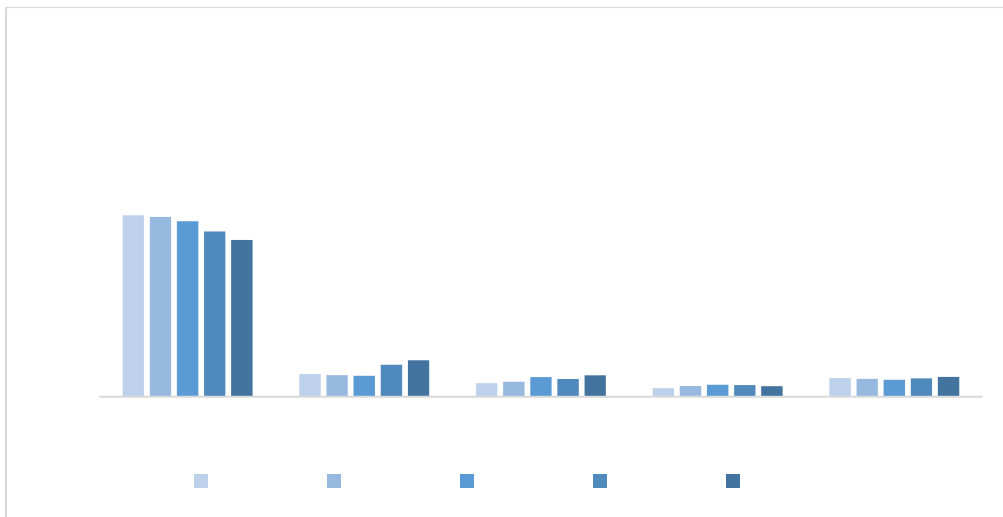
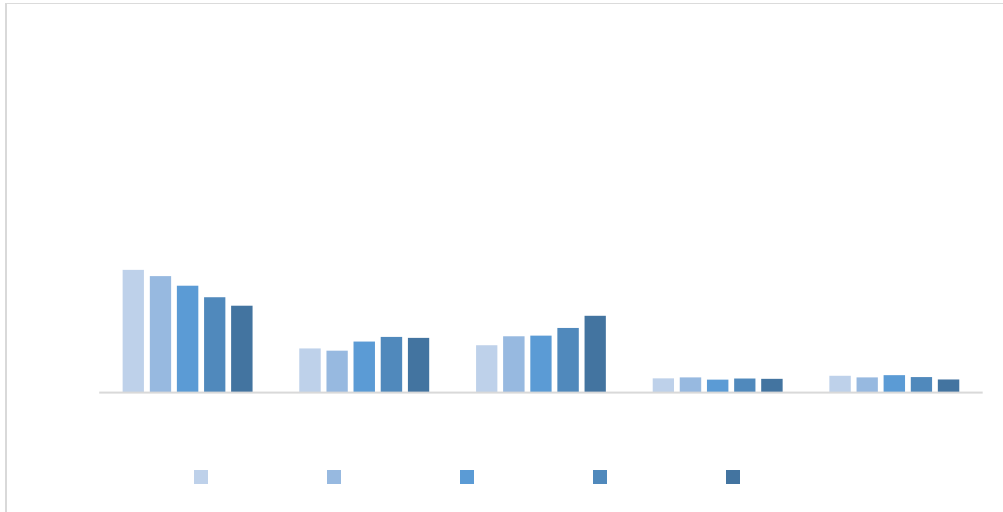
4.2 Postsecondary Outcomes by Dual Enrollment Status

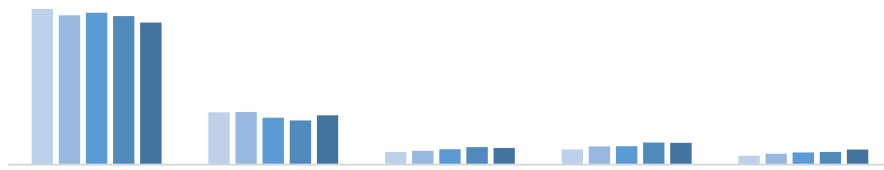


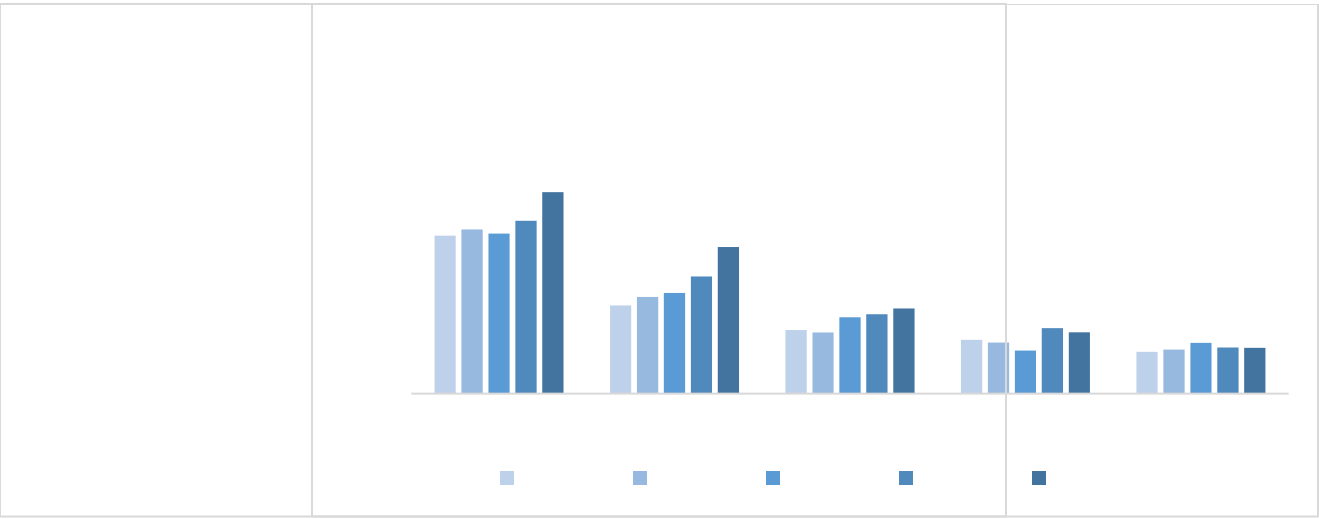


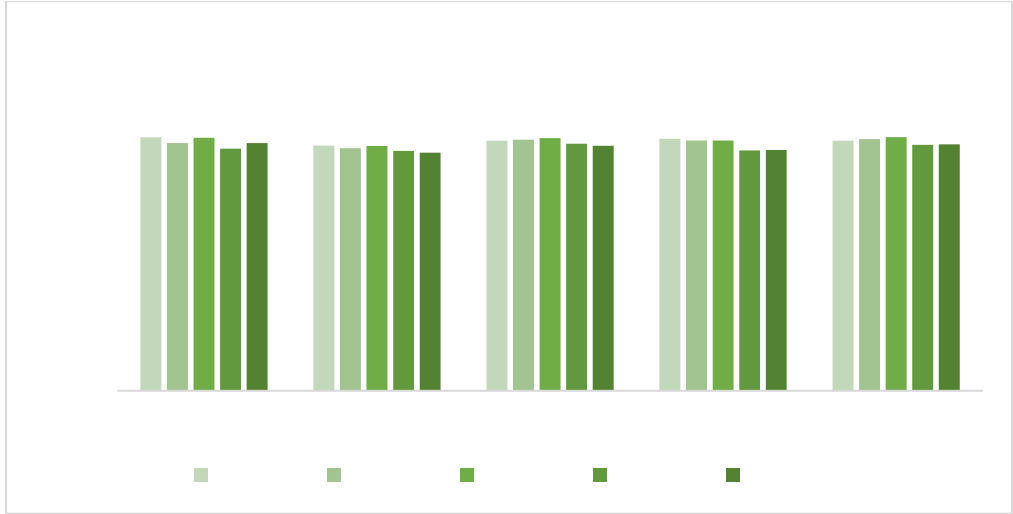
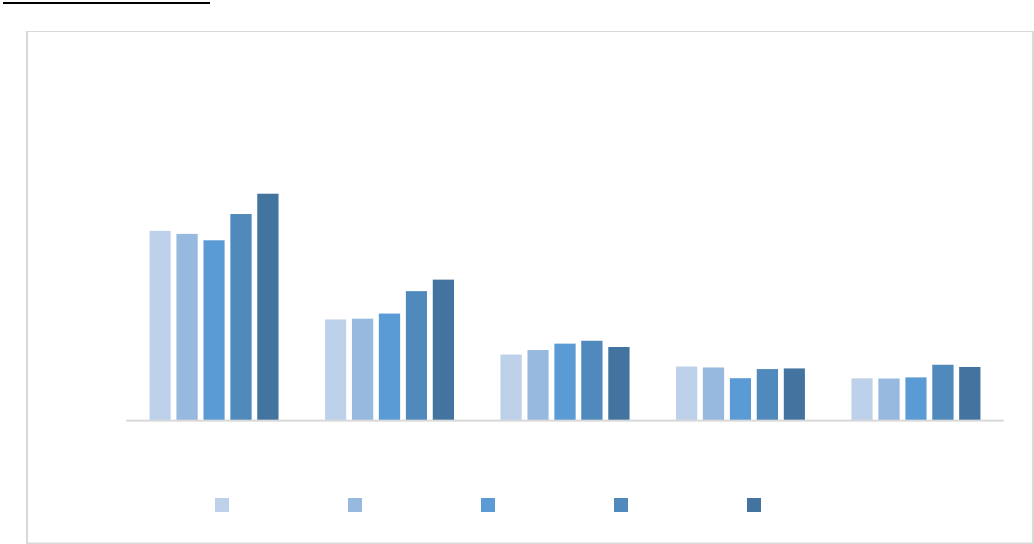


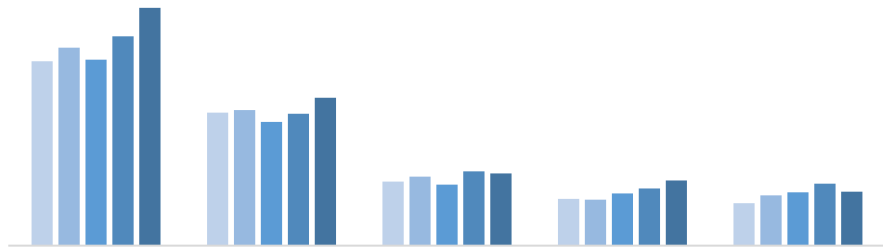
Appendix











University of Georgia
Dual Enrollment to FTF
Number of DE students (Summer 20-Spring 21)
Conversion to USG School as FTF in Fall 2021

